

# OCEAN ONE

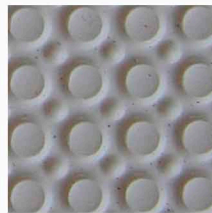
## Cockpit Flooring

Improve the comfort of your cockpit floor with a closed-cell material that is like having a "jandal" that covers your deck. It gives excellent grip, is shock absorbant, reduces noise, and provides a comfortable platform for a day of fishing. Cockpit Flooring is closed-cell, so won't absorb moisture, and can be easily removed for cleaning. No more smelly bait hiding in the gaps of your flooring!



*"Cockpit flooring I rate as the best of its kind. Provides tremendous grip and shock absorption, as well as vastly improved comfort. It is easy to clean and can be removed if necessary to enable a thorough wash-out underneath".*  
— Grant Dixon,  
Editor NZ Fishing News

Pattern: "Octi" pattern



Sheet size: 1220mm x 1100mm x 9mm (trimmed)

Colour: Light Grey

## Marina Fender

Protect your boat with durable, non-marking Marina Fenders.

Won't go hard and brittle

Easy attachment system with foam plugs to cover screws

Won't mark your boat

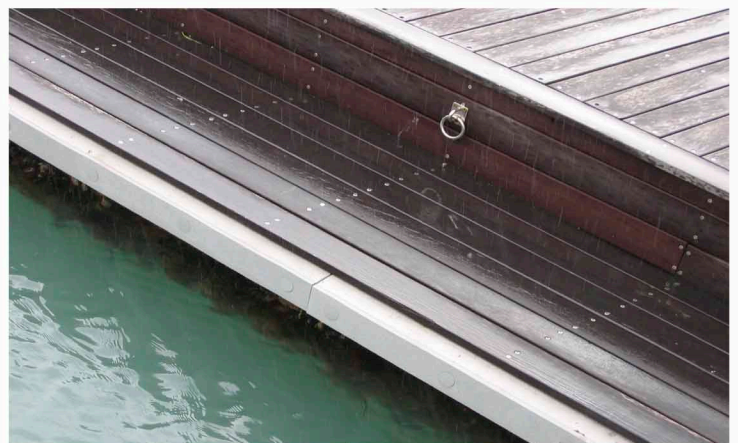
Won't absorb oil or water

Impact absorbing

Size: Small 1000mm x 100/70mm  
Large 1000mm x 140/100mm

Thickness: 56mm

Colour: Light Grey



# ULTRALON

Ultralon Products (NZ) Limited  
100 Cumnor Tce, Christchurch  
Ph (03) 389 4325 Fax (03) 389 8061  
[www.ultralon.co.nz](http://www.ultralon.co.nz)